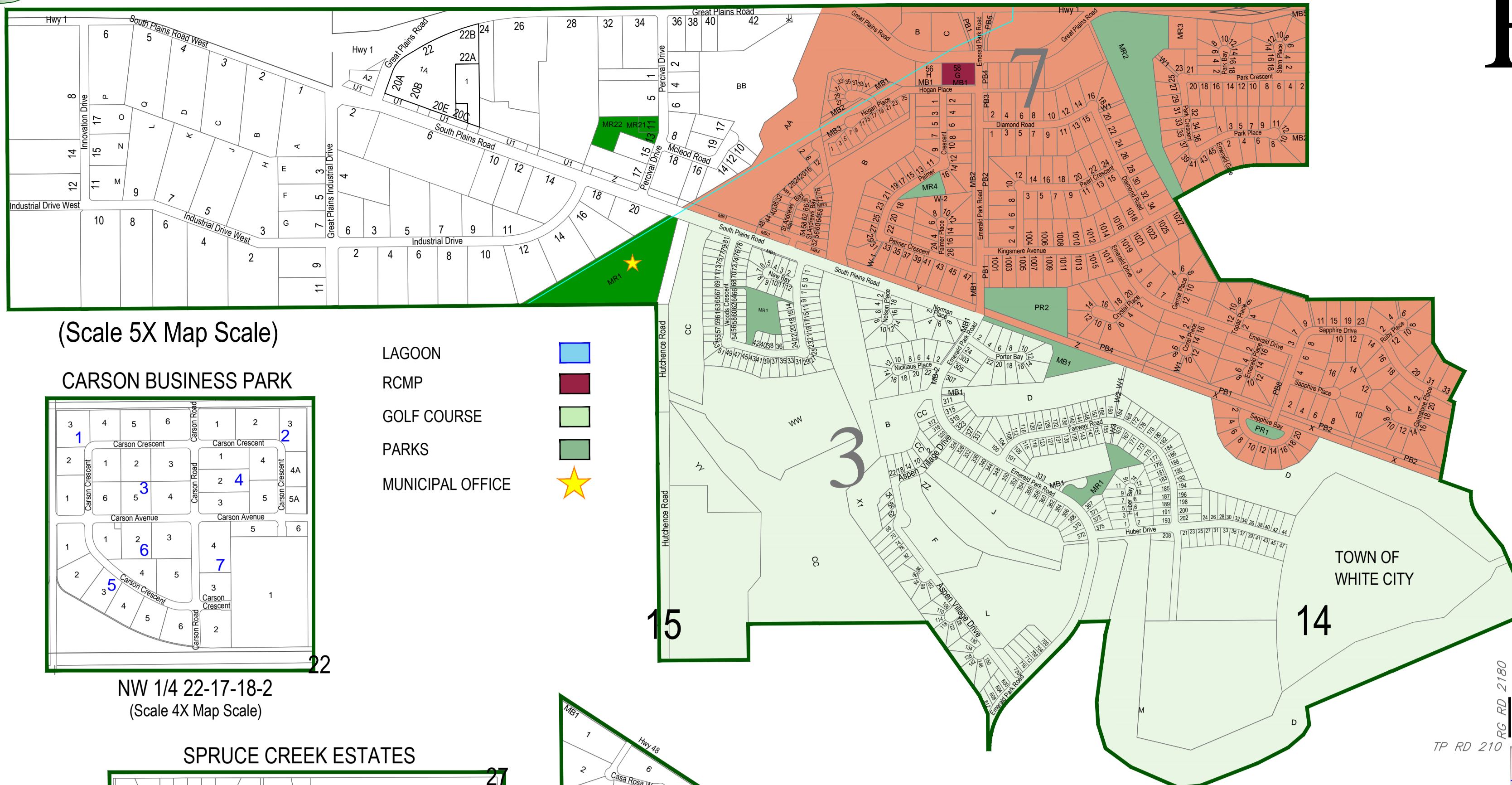
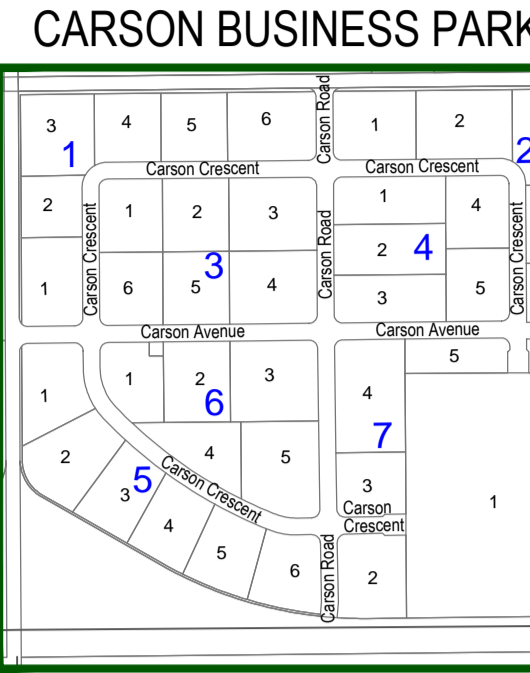


RURAL MUNICIPALITY of EDENWOLD No. 158

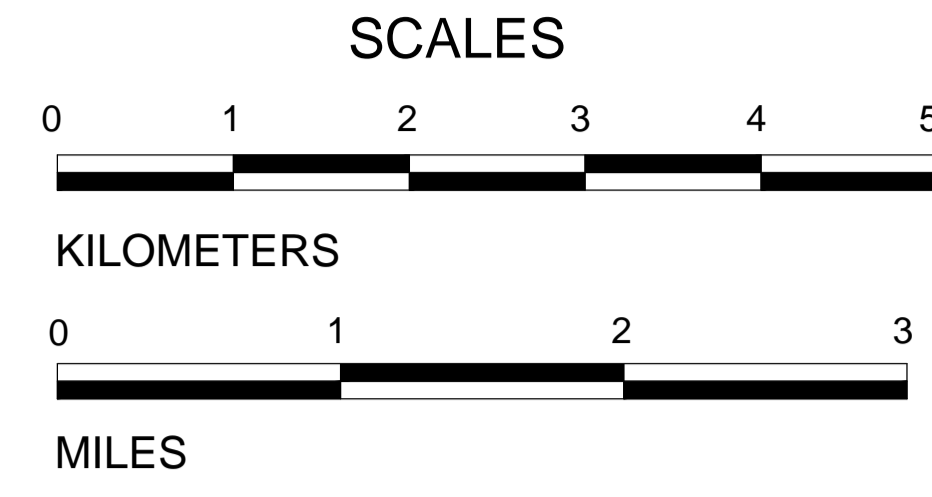
WEST OF THE SECOND MERIDIAN



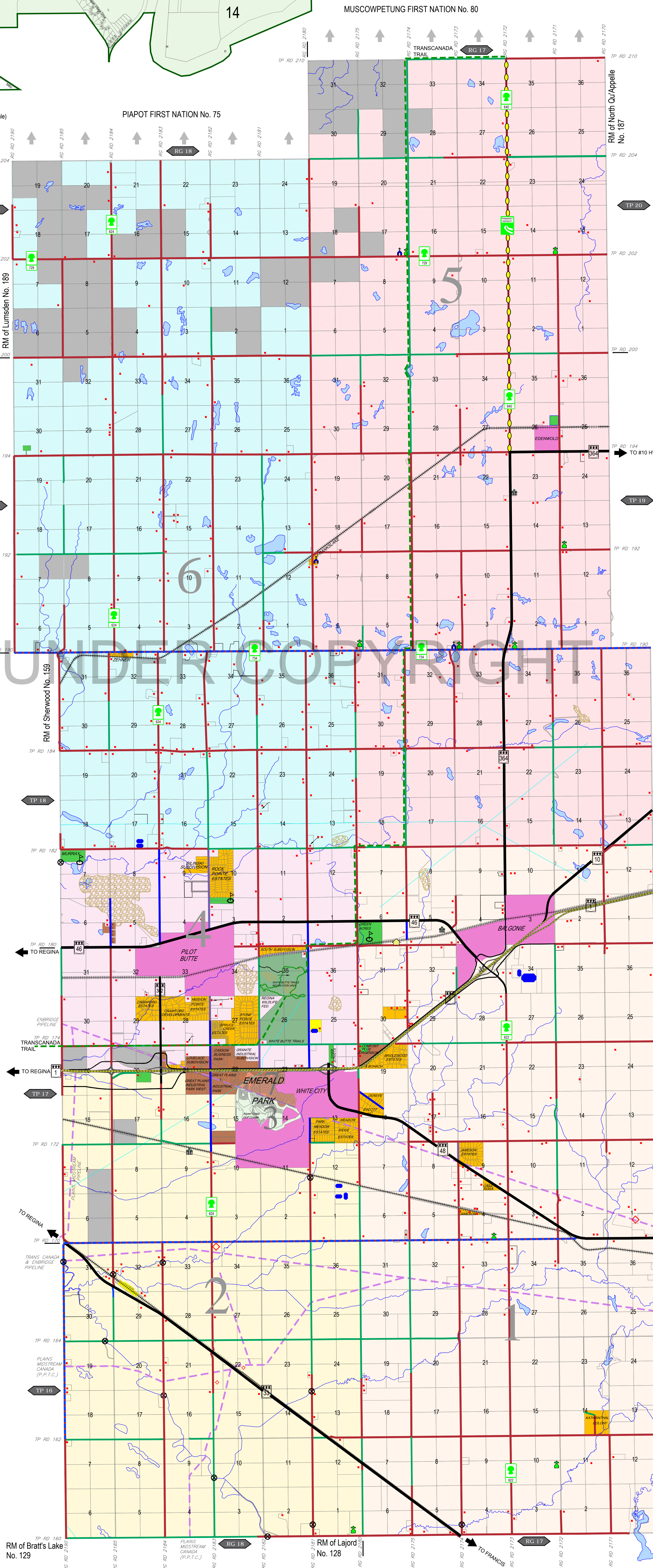
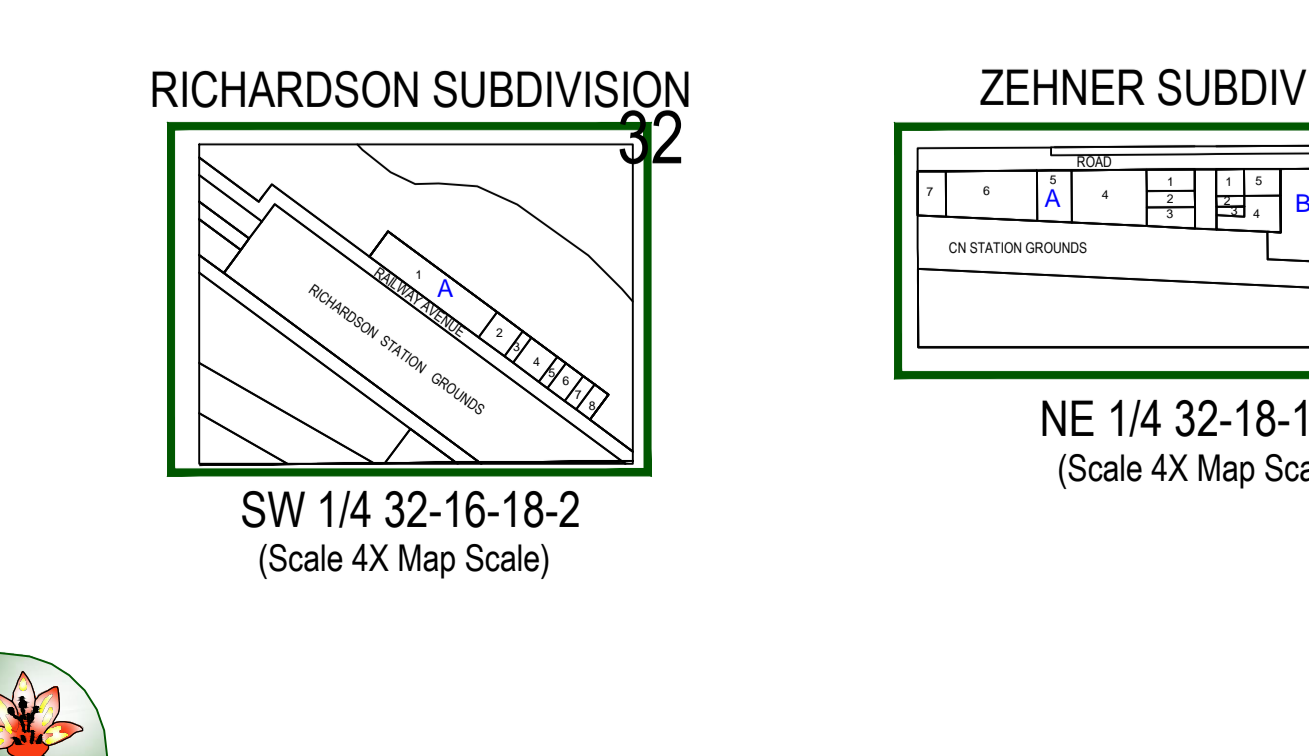
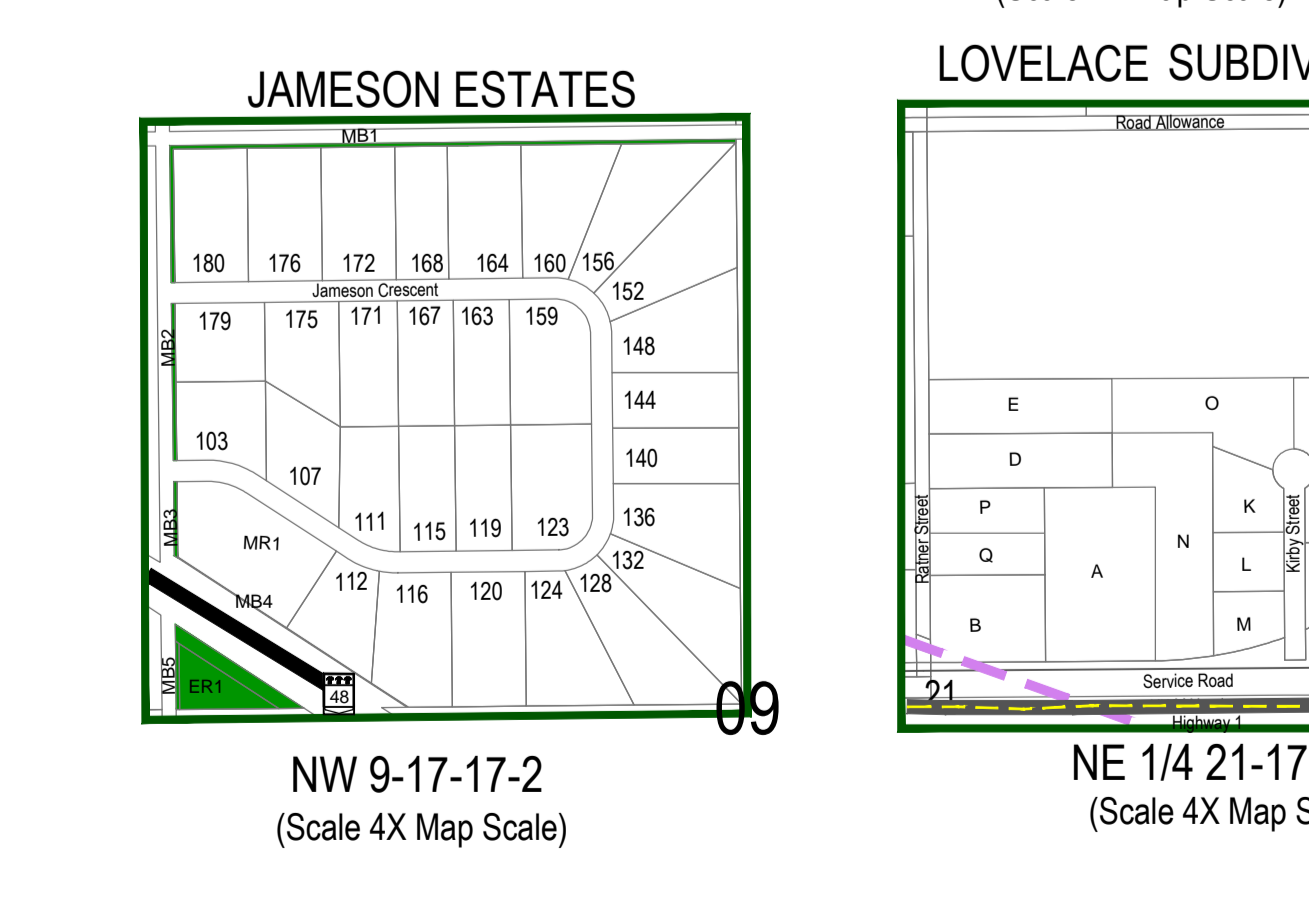
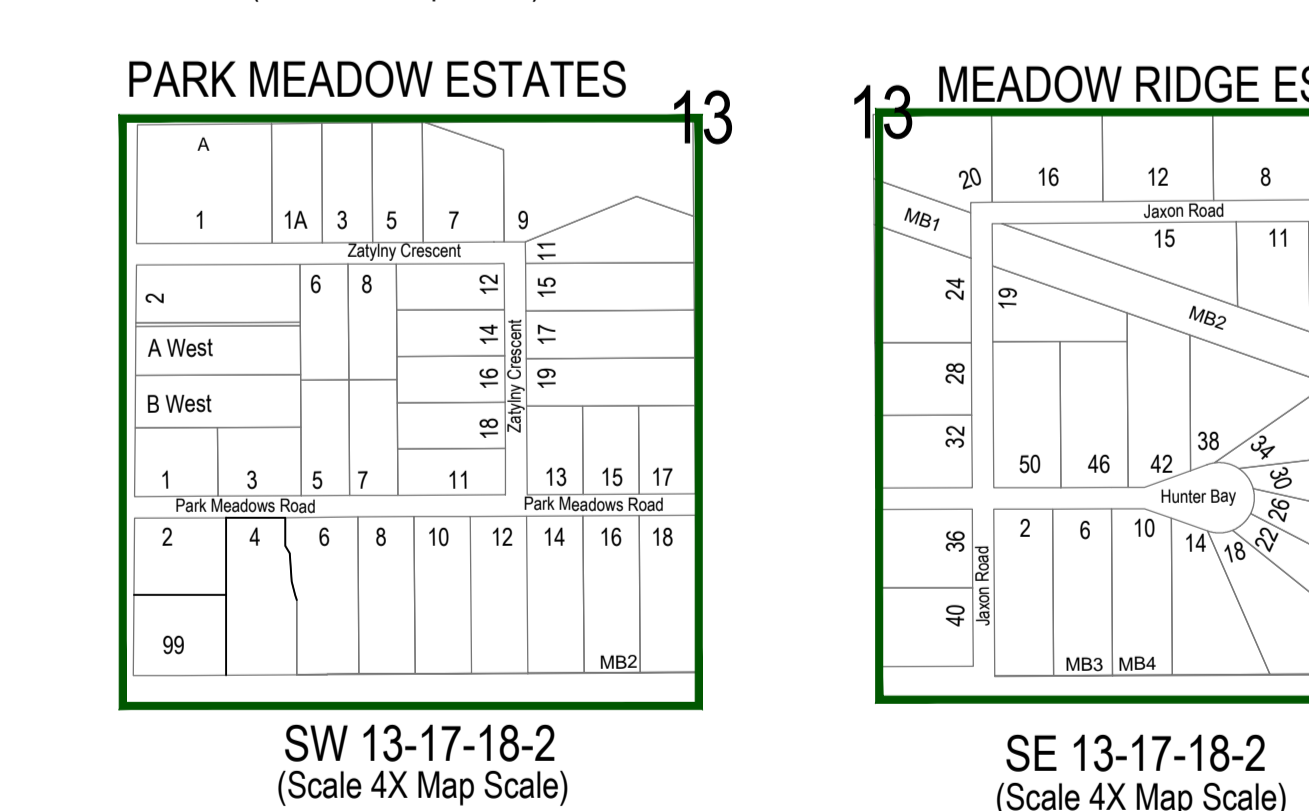
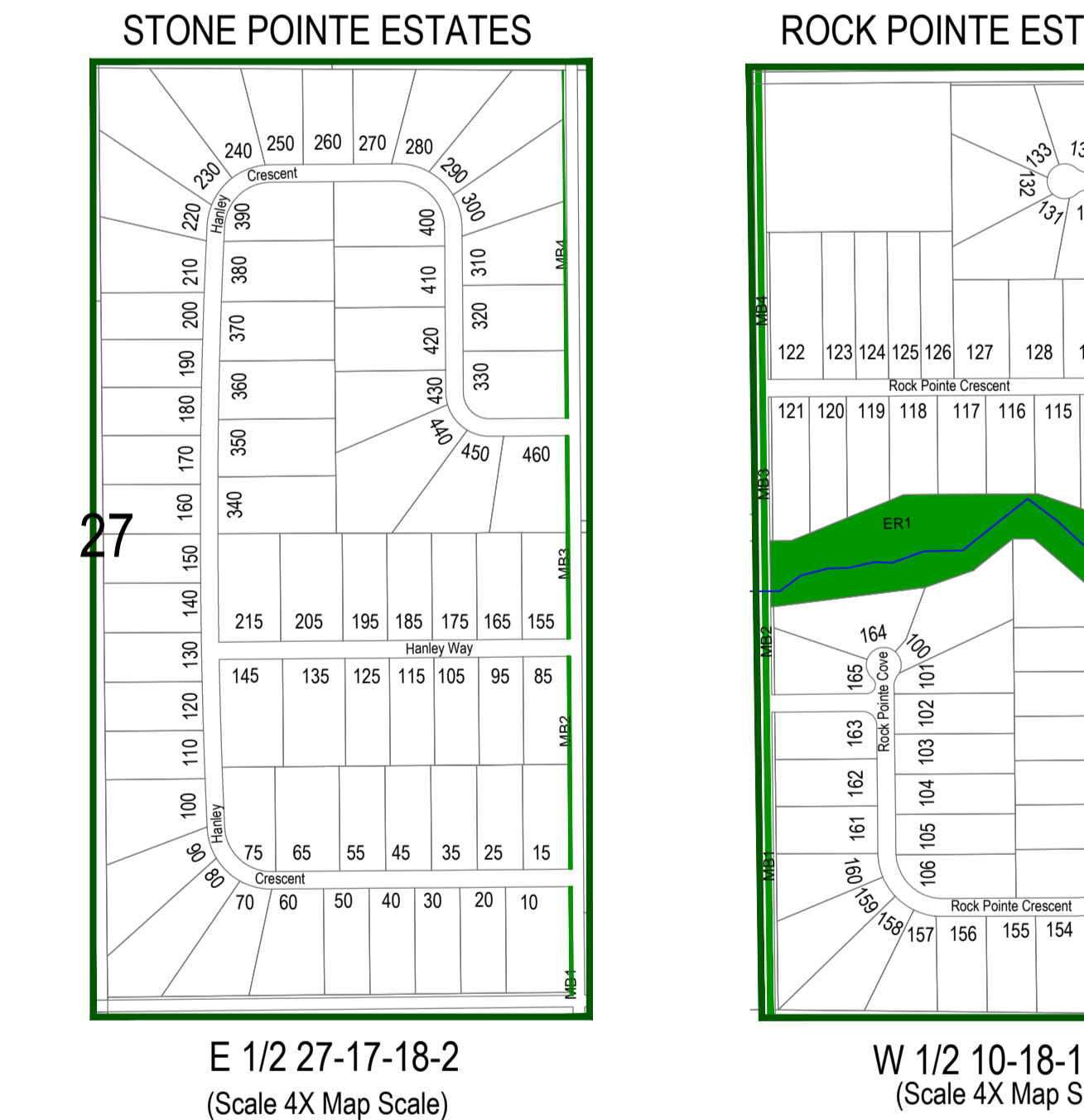
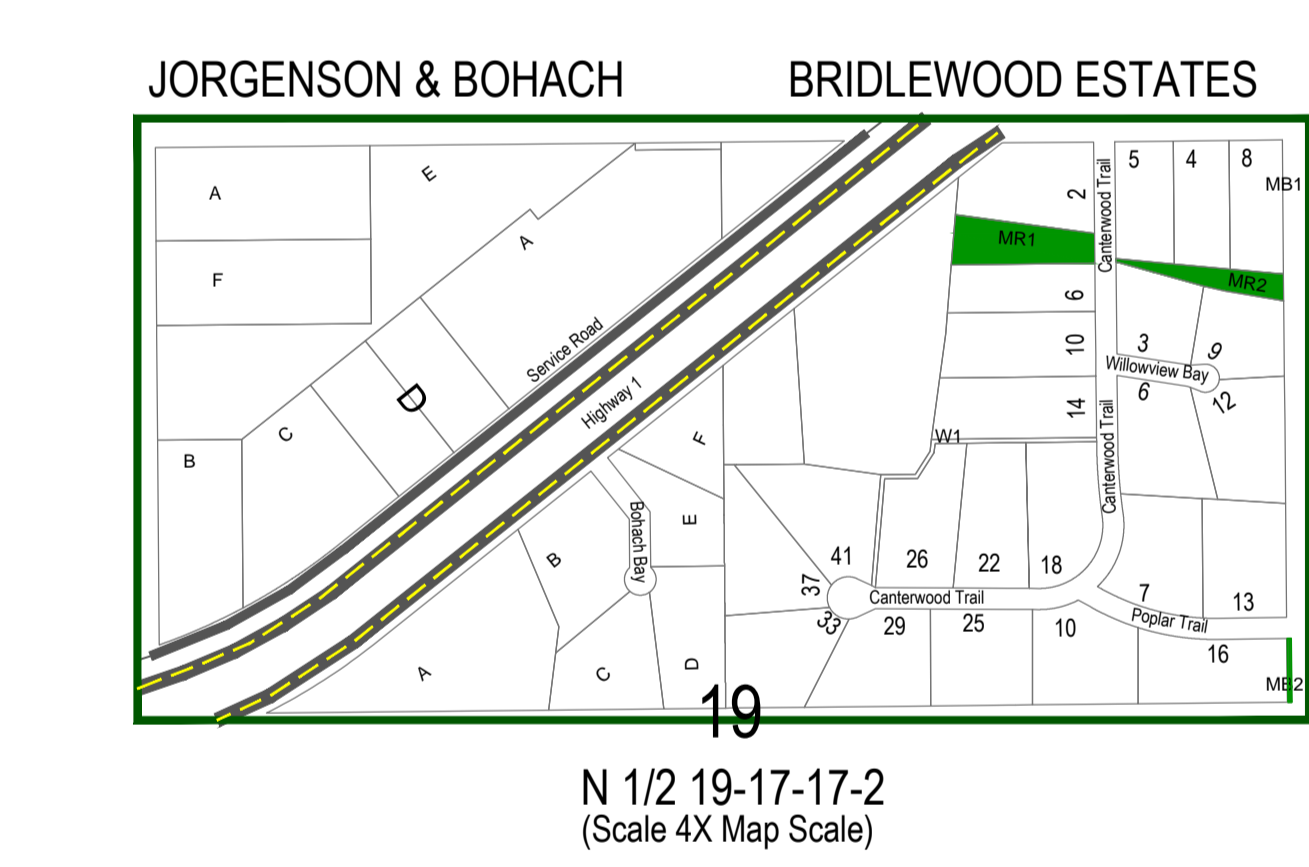
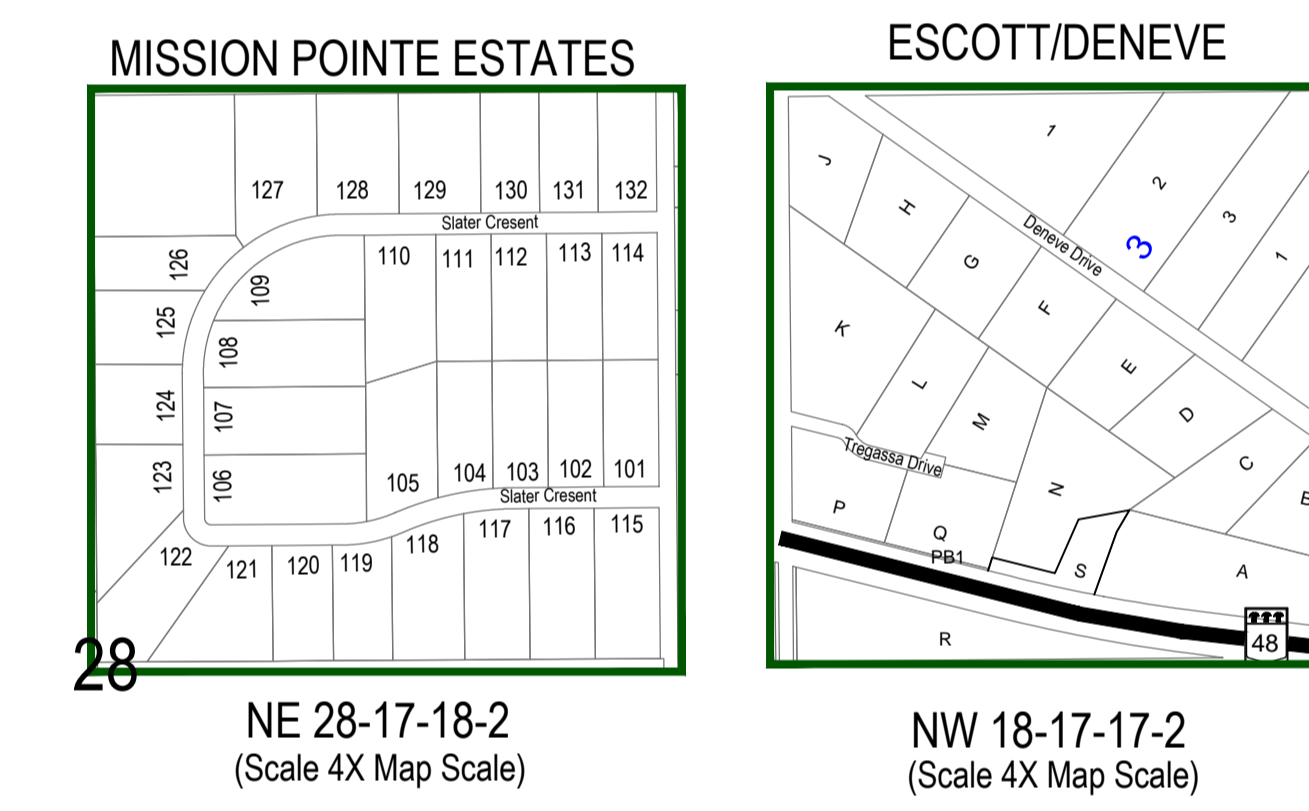
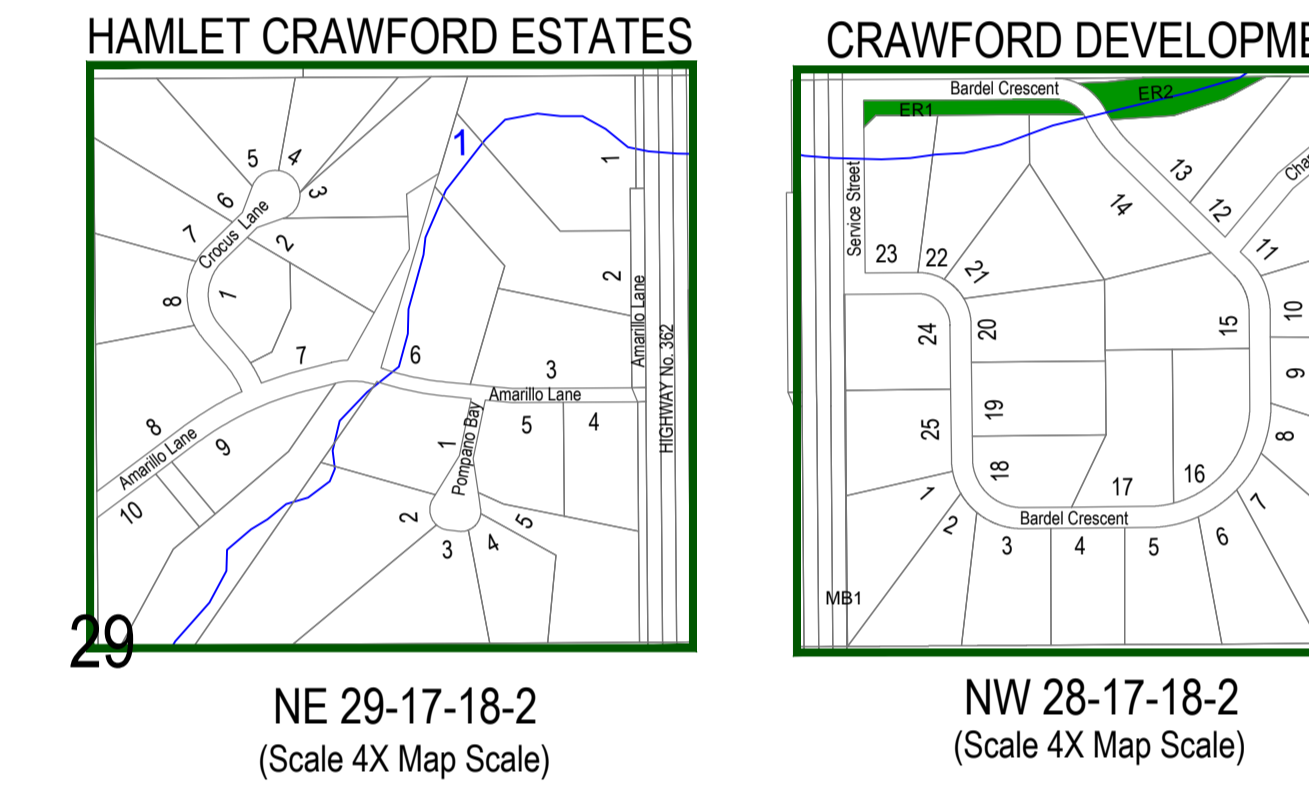
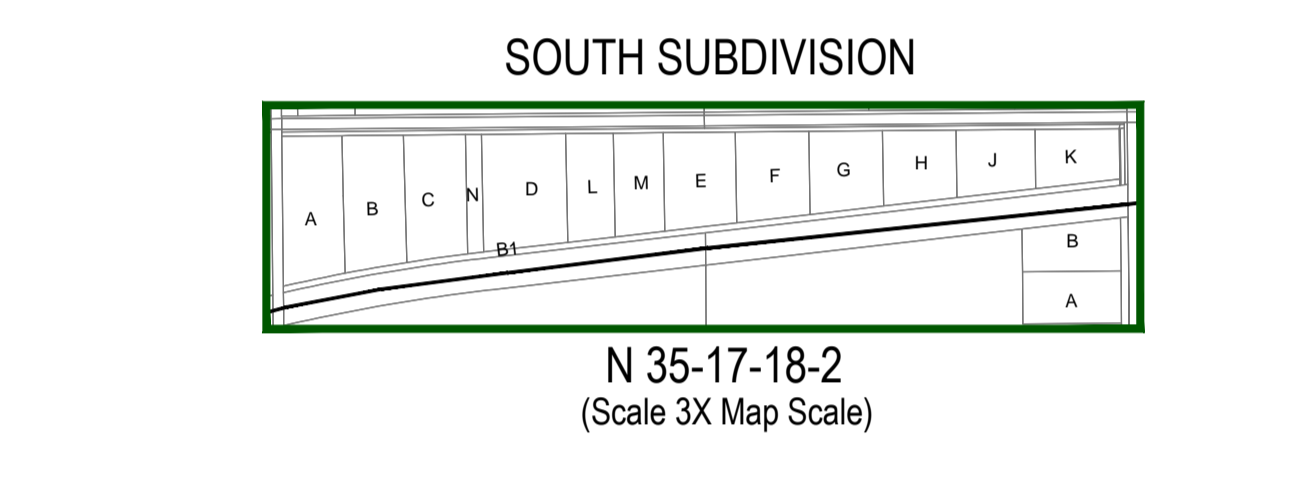
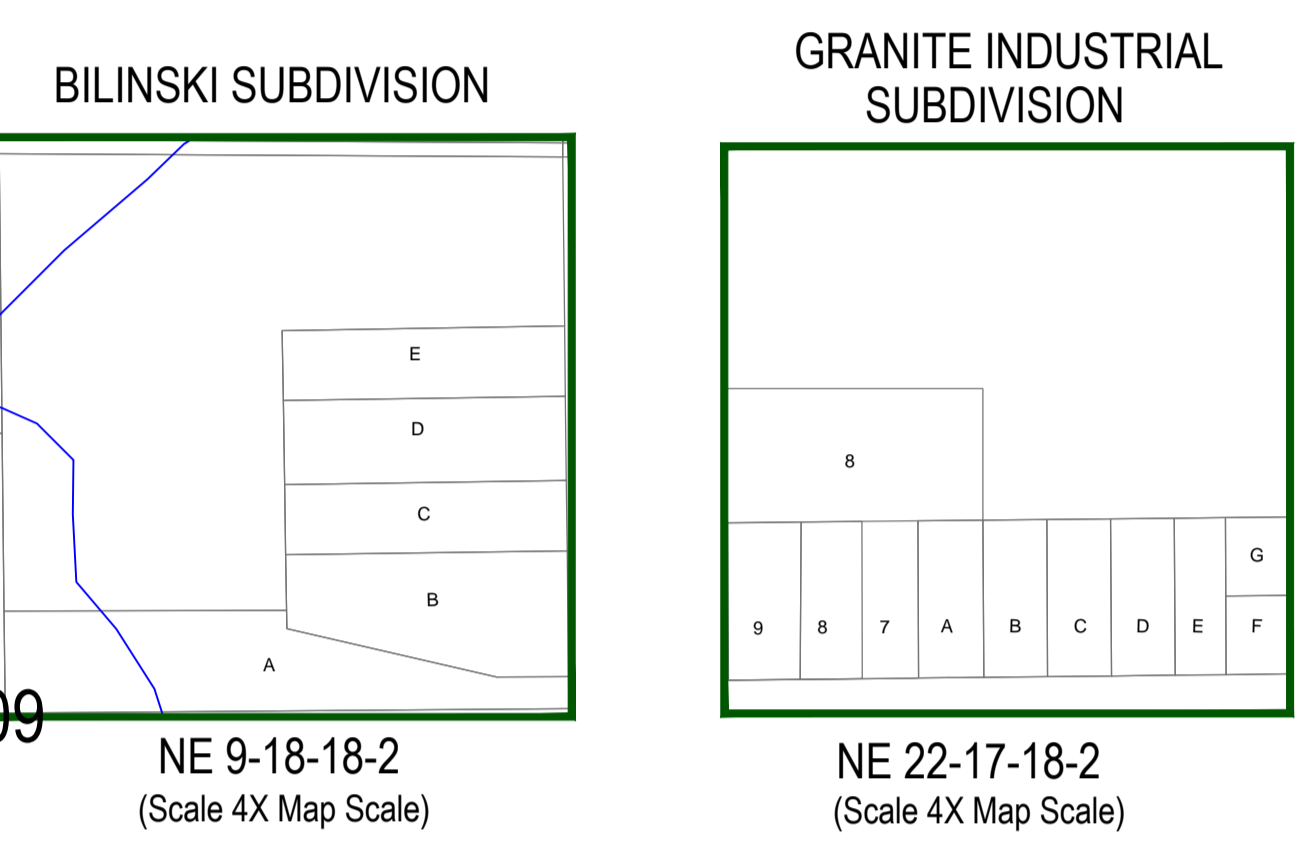
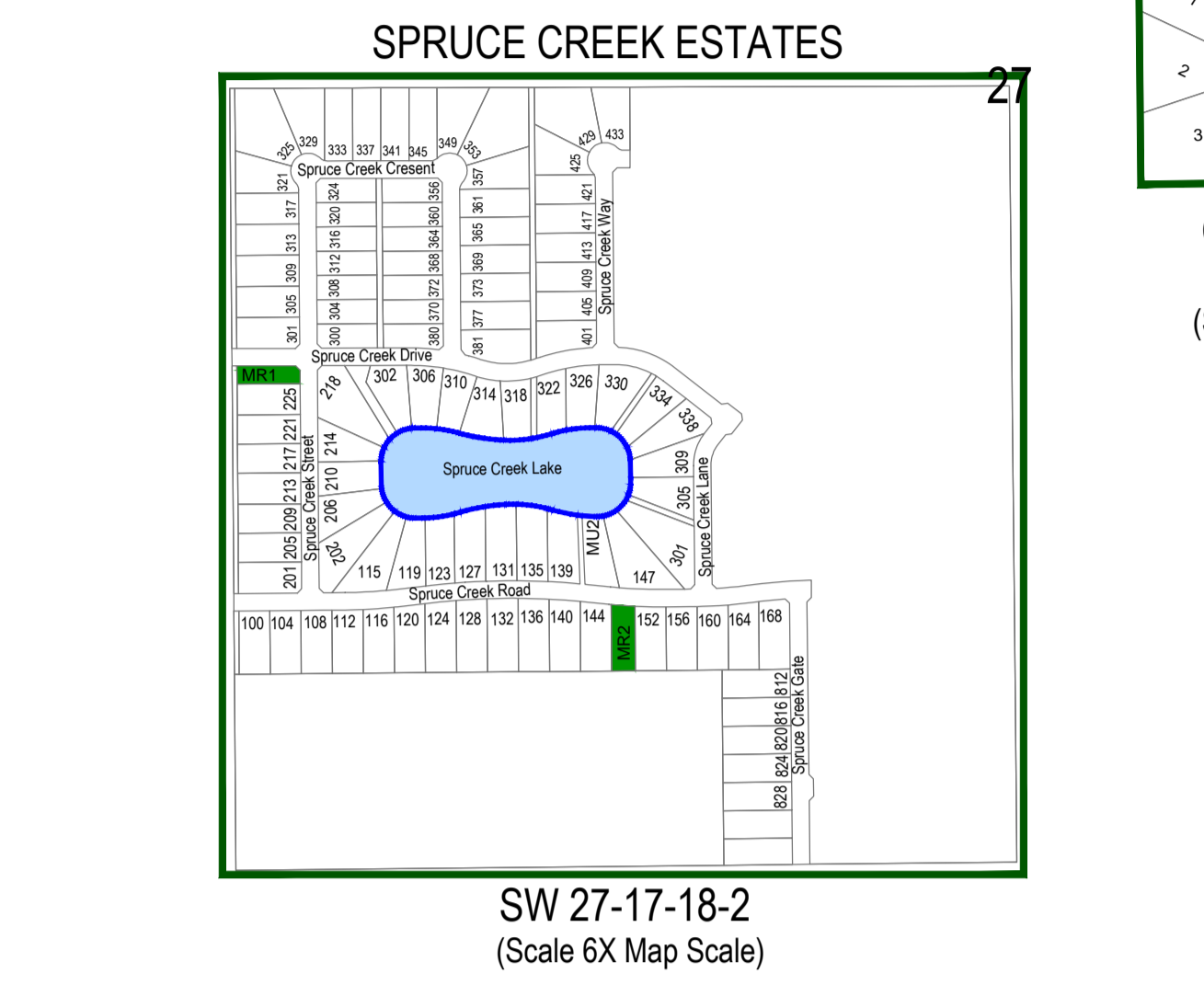
CARSON BUSINESS PARK



- LAGOON
- RCMP
- GOLF COURSE
- PARKS
- MUNICIPAL OFFICE



100 Hutchence Road
 Emerald Park, SK S4L 1C6
 Phone: (306) 771-2522
 Email: rm158@sasktel.net

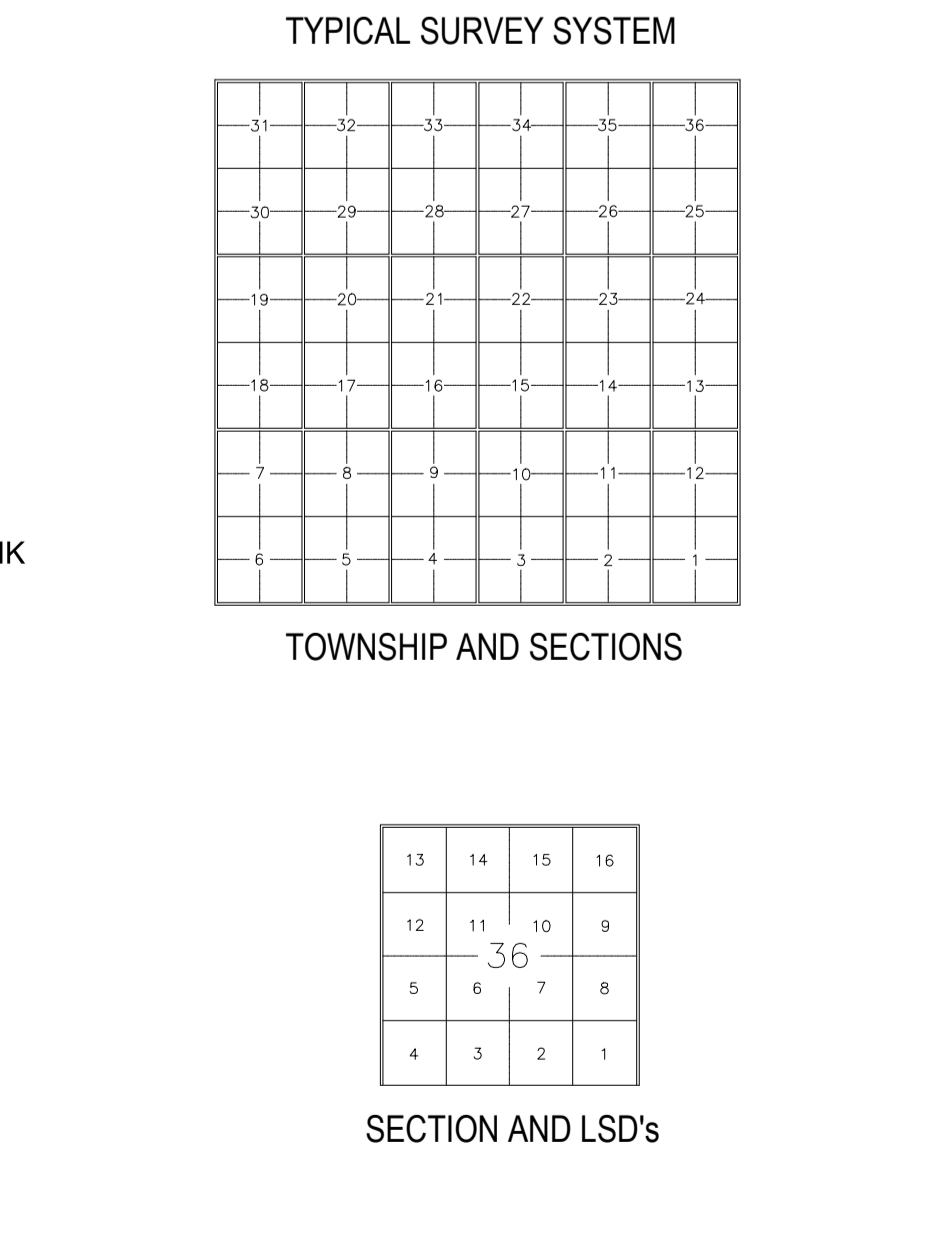
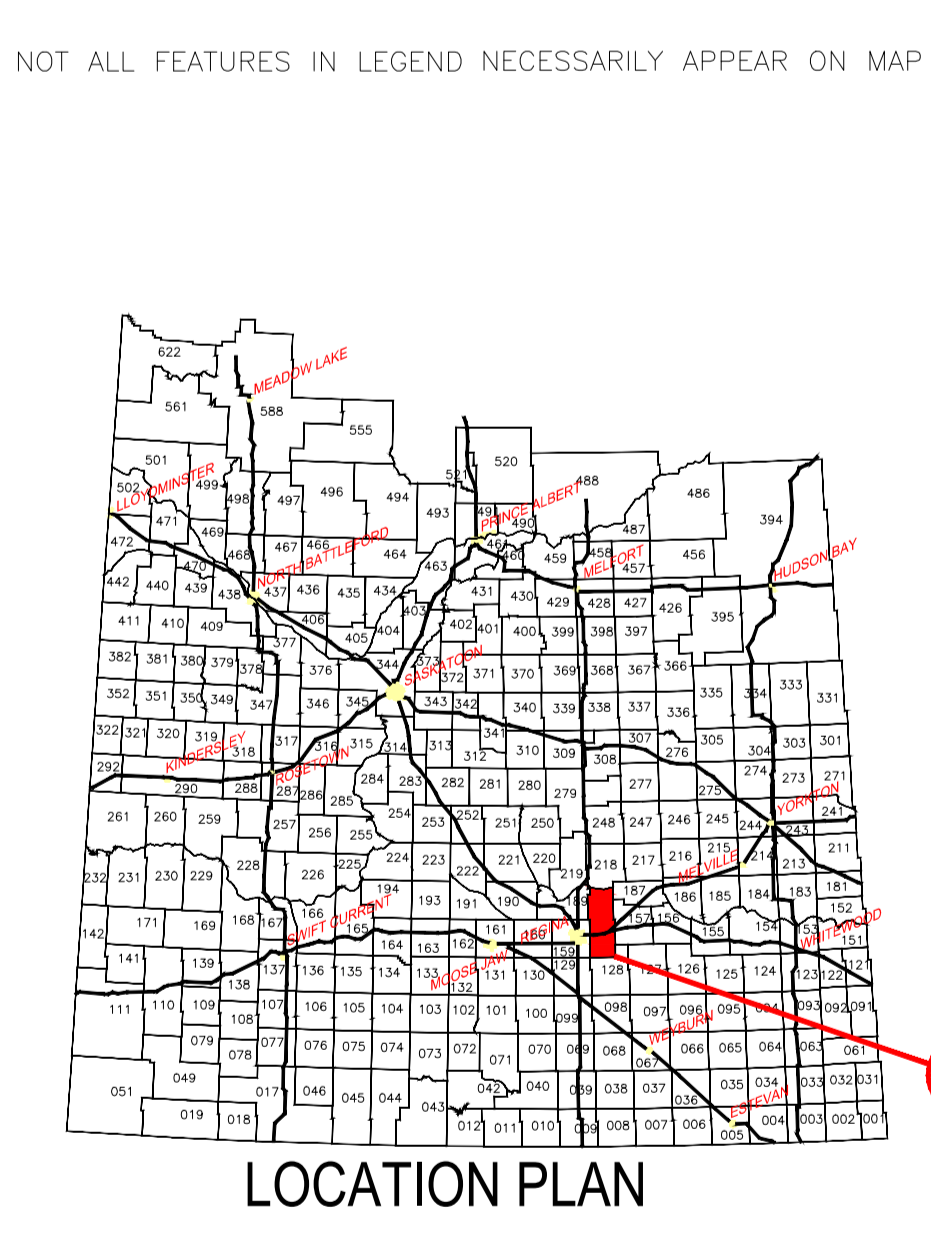


MUNICIPAL COUNCIL

DIVISION INDEX	REEVE	Huber, Mitchell
DIVISION 1	Councillor	Stratwick, Craig
DIVISION 2	Councillor	Coppenhurn, Stan
DIVISION 3	Councillor	Vacant
DIVISION 4	Councillor	Kojak, Karen
DIVISION 5	Councillor	Radtacher, Dwayne
DIVISION 6	Councillor	Bratt, Tim
DIVISION 7	Councillor	Tuttschewer, Rod L.

LEGEND

- Highway-2 Lane
- Highway-4 Lane
- CTP Road Primary
- Municipal Gravel
- Municipal Dirt
- Municipal Paved Primary
- Municipal Paved Secondary
- TransCanada Trail
- Overdimensional Route
- Unimproved
- Railway
- Pipelines
- Sask Power Transmission Line
- Church
- Cemetery
- Residence
- Bridge
- Tower
- Lake/Slough
- River/Creek
- Lagoon
- Gravel Pit
- Grain Terminal
- Municipal Office
- Mustard Plant
- Community Hall
- Golf Course
- Compressor/Pumping Station
- City, Town, Village
- First Nation Land
- Recreation Area



THIS MAP IS FOR REFERENCE USE ONLY, AND NEITHER PRAIRIE MAPPING INDUSTRIES LTD. OR THE MUNICIPALITY ARE RESPONSIBLE FOR ANY ERRORS OR OMISSIONS WHICH MAY BE PRESENT ON THIS MAP. PLEASE NOTIFY THE RM OFFICE OF ANY ERRORS OR DISCREPANCIES.

DISCLAIMER & COPYRIGHT NOTICE

The production of this map remains the property of Prairie Mapping Industries Ltd. and as such cannot be reproduced in any format, including digitally, without the written permission from Prairie Mapping Industries Ltd. Unauthorized reproduction in whole or part by any means is strictly prohibited.

The information shown on this map is obtained from outside sources and Prairie Mapping Industries Ltd. can not be responsible for any errors or omissions which may be present on this map. For errors or omissions please notify the office using the contact information found on this map.

Roads are highlighted by the Municipality under normal water conditions. No order of ploughing is implied. It is the responsibility of the user to determine accessibility before traveling on any road. Neither Prairie Mapping Industries Ltd. nor the Municipality assume any liability for any accidents which may occur because of road conditions.

PRAIRIE MAPPING INDUSTRIES LTD.
 Box 40, Theodora SK S0A 4C0
 Phone (306) 647-2550
 Fax (306) 647-2555
 Website www.primapping.ca
 Operating as a C.L.C. Mapping Association

Revised by: Colleen Bicknell September 10, 2021
 Drawn by: Bruce Fredrickson November 3, 2013