

RURAL MUNICIPALITY of EDENWOLD No. 158

WEST OF THE SECOND MERIDIAN

(Scale 5X Map Scale)



- LAGOON
- RCMP
- GOLF COURSE
- PARKS
- MUNICIPAL OFFICE

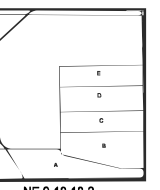
NW 1/4 22-17-18-2 (Scale 4X Map Scale)



CASA ROSA SE 9-17-17-2 (Scale 4X Map Scale)

PIAPOT FIRST NATION No. 75

BILINSKI SUBDIVISION



GRANITE INDUSTRIAL SUBDIVISION



NE 9-18-18-2 (Scale 4X Map Scale)

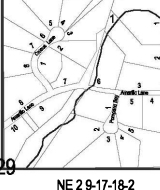
NE 2-2-17-18-2 (Scale 4X Map Scale)

SOUTH SUBDIVISION



N 35-17-18-2 (Scale 3X Map Scale)

HAMLET CRAWFORD ESTATES



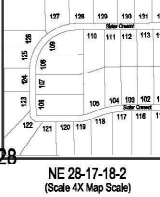
CRAWFORD DEVELOPMENT



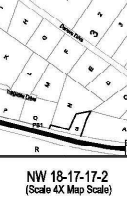
NE 2-9-17-18-2 (Scale 4X Map Scale)

NW 28-17-18-2 (Scale 4X Map Scale)

MISSION POINT ESTATES



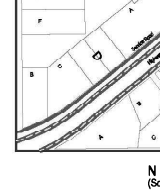
ESCOTT/DENEVE



NE 28-17-18-2 (Scale 4X Map Scale)

NW 18-17-17-2 (Scale 4X Map Scale)

JORGENSEN & BOHACH



BRIDLEWOOD ESTATES

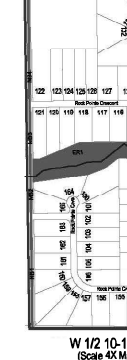


N 1/2 1-9-17-17-2 (Scale 4X Map Scale)

STONE POINT ESTATES



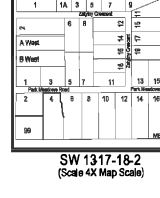
ROCK POINT ESTATES



E 1/2 27-17-18-2 (Scale 4X Map Scale)

W 1/2 10-18-18-2 (Scale 4X Map Scale)

PARK MEADOW ESTATES



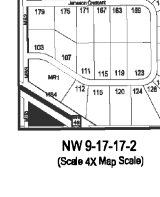
MEADOW RIDGE ESTATES



SW 13-17-18-2 (Scale 4X Map Scale)

SE 13-17-18-2 (Scale 4X Map Scale)

JAMESON ESTATES



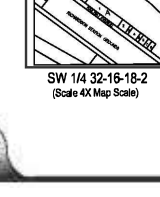
LOVELACE SUBDIVISION



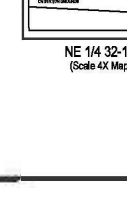
NW 9-17-17-2 (Scale 4X Map Scale)

NE 1/4 2-1-17-18-2 (Scale 4X Map Scale)

RICHARDSON SUBDIVISION

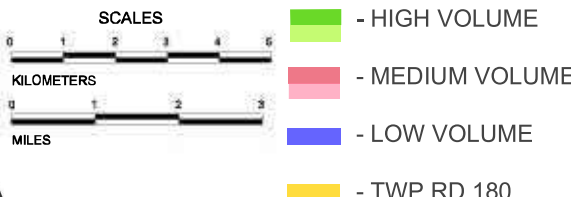


ZEHNER SUBDIVISION



SW 1/4 32-16-18-2 (Scale 4X Map Scale)

NE 1/4 32-18-18-2 (Scale 4X Map Scale)



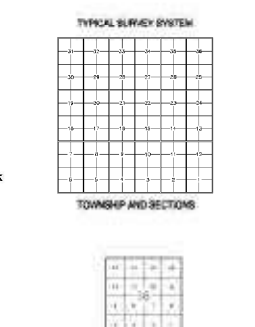
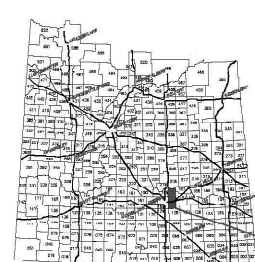
MUNICIPAL COUNCIL

Chairman	Walter	Ray	Walter
Ward 1	County	Ward 2	County
Ward 3	County	Ward 4	County
Ward 5	County	Ward 6	County
Ward 7	County	Ward 8	County
Ward 9	County	Ward 10	County

LEGEND

Highway-2 Lane	--- 33 ---
Highway-4 Lane	--- 44 ---
CTP Road Primary	--- 55 ---
Municipal Drive	--- 66 ---
Municipal Dirt	--- 77 ---
Municipal Paved Primary	--- 88 ---
Municipal Paved Secondary	--- 99 ---
TransCanada Trail	--- 100 ---
Overhead Power Lines	--- 111 ---
Unimproved	--- 122 ---
Railway	--- 133 ---
Pipelines	--- 144 ---
Sub Flow Transmission Line	--- 155 ---
Church	--- 166 ---
Cemetery	--- 177 ---
Residence	--- 188 ---
Bridge	--- 199 ---
Tower	--- 200 ---
Lake/Slough	--- 211 ---
River/Creek	--- 222 ---
Lagoon	--- 233 ---
Gravel Pit	--- 244 ---
Gas Terminal	--- 255 ---
Municipal Office	--- 266 ---
Muskrat Plant	--- 277 ---
Community Hall	--- 288 ---
Golf Course	--- 299 ---
Compressor/Pumping Station	--- 300 ---
City, Town, Village	--- 311 ---
First Nation Land	--- 322 ---
Recreation Area	--- 333 ---

NOT ALL FEATURES IN LEGEND NECESSARILY SHOWN ON THIS MAP.



DISCLAIMER

This map is for reference only and neither the Rural Municipality of Edenwold No. 158 nor the Surveyor General of Saskatchewan is responsible for any errors or omissions which may be present on this map. The user is advised to verify the accuracy of the information shown on this map by independent means. The Rural Municipality of Edenwold No. 158 is not responsible for any errors or omissions which may be present on this map.

PLANNING & DEVELOPMENT

444, Thompson St. Box 402
Edenwold, Saskatchewan S0A 2T0
Phone: (306) 837-2200
Fax: (306) 837-2200
Website: www.edenwold.ca

Printed by: Bruce Robertson, December 10, 2013